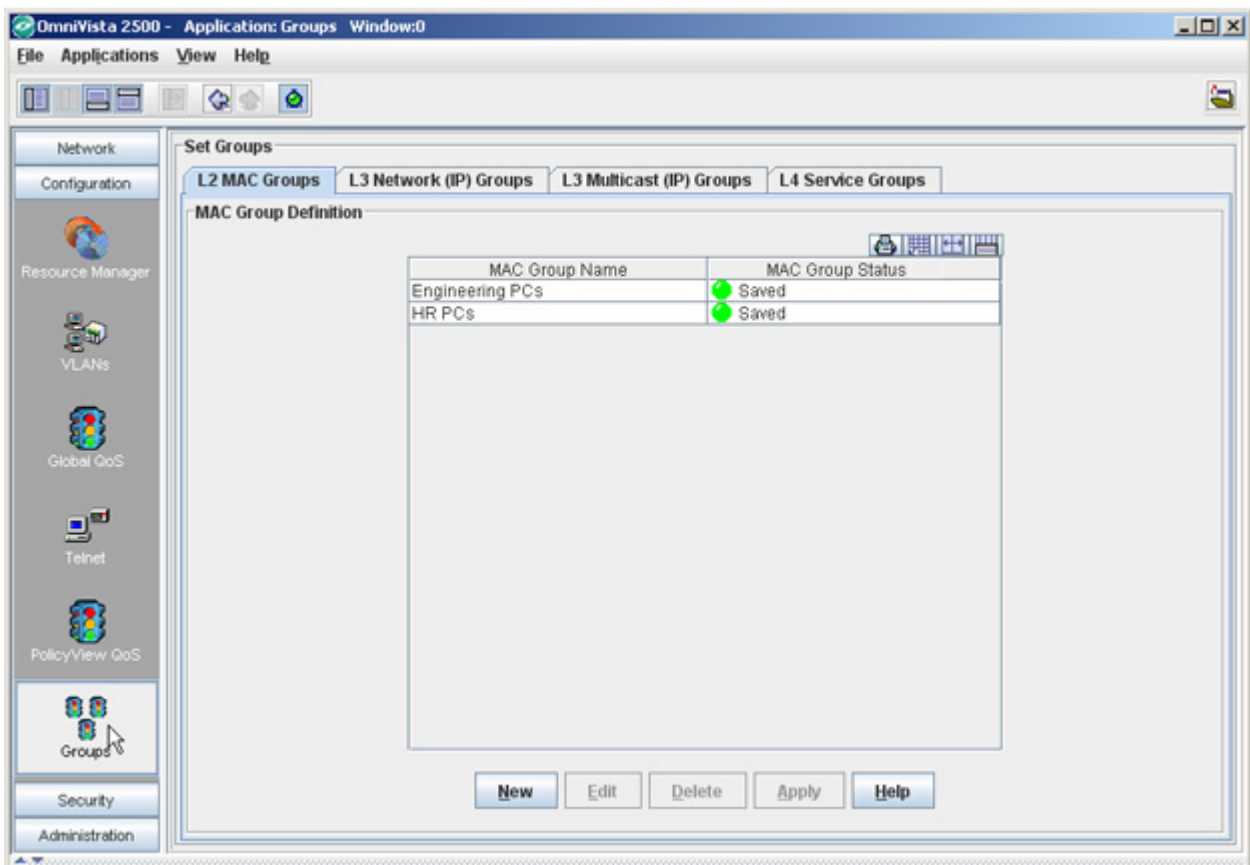


Getting Started with Groups

The Groups application enables you to create groups, which can be used in various policy conditions of PolicyView QoS and SecureView ACL policies. Groups are stored on an LDAP (Lightweight Directory Access Protocol) repository that is automatically installed with the Groups application and resides on the same device as the OmniVista server. When the switches in the network are notified to re-cache their policy information, the firmware loads the groups referred by these policies.

When you first start the Groups application, the **L2 MAC Groups**, the **L3 Network (IP) Groups**, the **L3 Multicast (IP) Groups**, and the **L4 Service Groups** tabs are displayed. Any existing MAC groups are displayed in the L2 MAC Groups tab.

The Groups Application



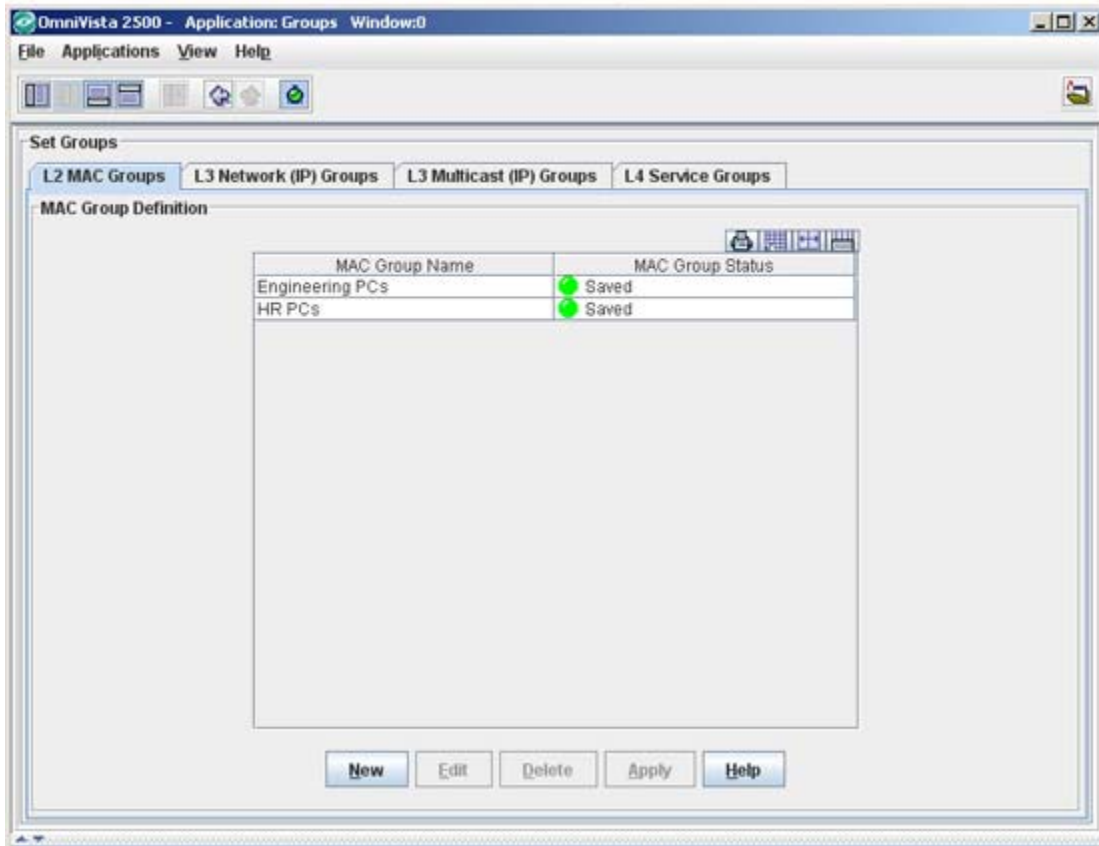
The Groups application enables you to create three types of groups:

- MAC Groups
- Network (IP) Groups
- Multicast (IP) Groups
- Service Groups

L2 MAC Groups Overview

The **L2 MAC Groups** tab enables you to create MAC groups, which can be used in creating various policy conditions, such as source MAC group condition and destination MAC group condition.

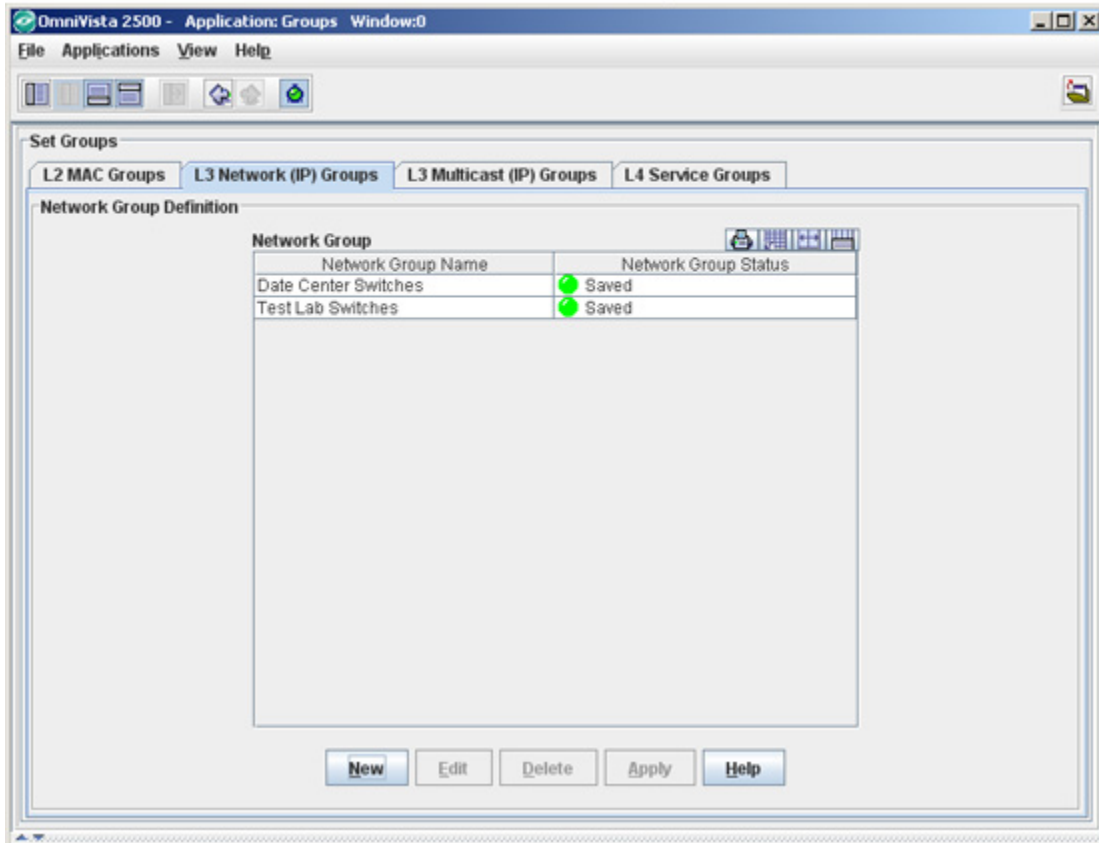
The MAC Groups Tab



L3 Network (IP) Groups Overview

The **L3 Network (IP) Groups** tab enables you to create Network groups, which can be used in creating various policy conditions, such as source Network group condition and destination Network group condition.

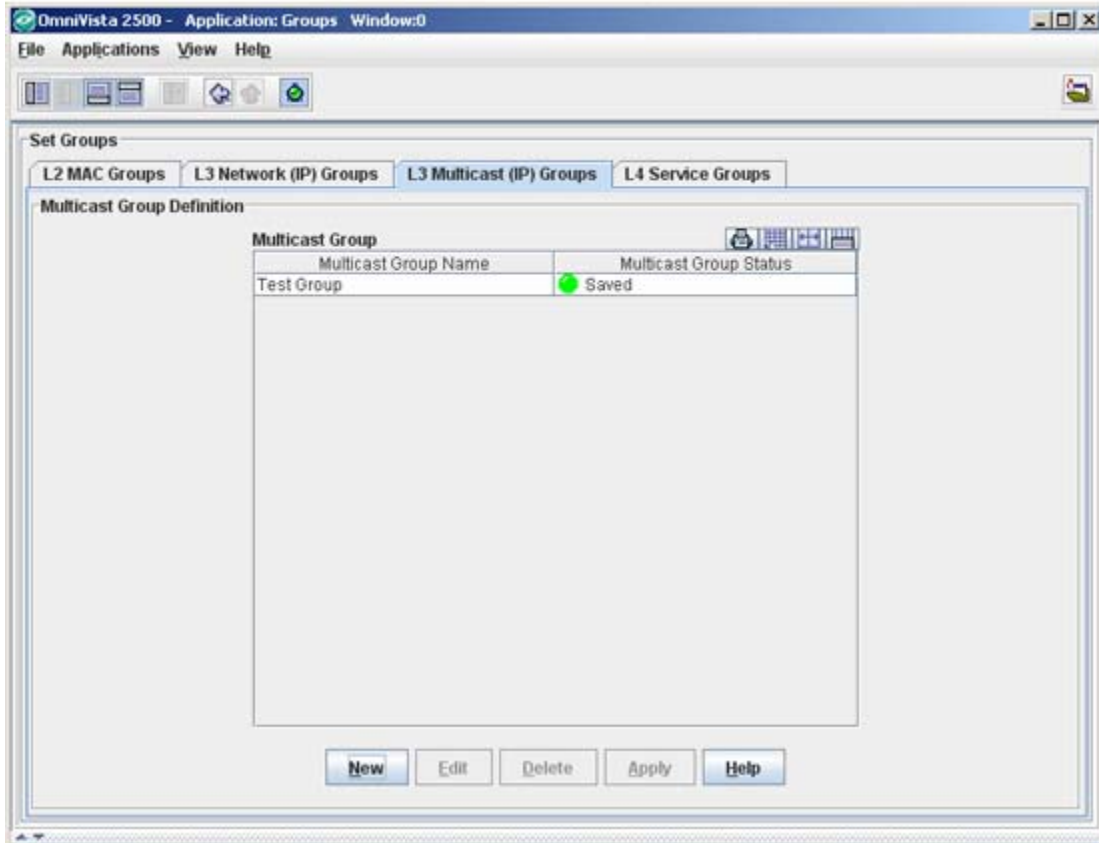
The Network (IP) Groups Tab



L3 Multicast (IP) Groups Overview

The **L3 Multicast Groups** tab enables you to create multicast groups, which can be used in creating multicast group policies.

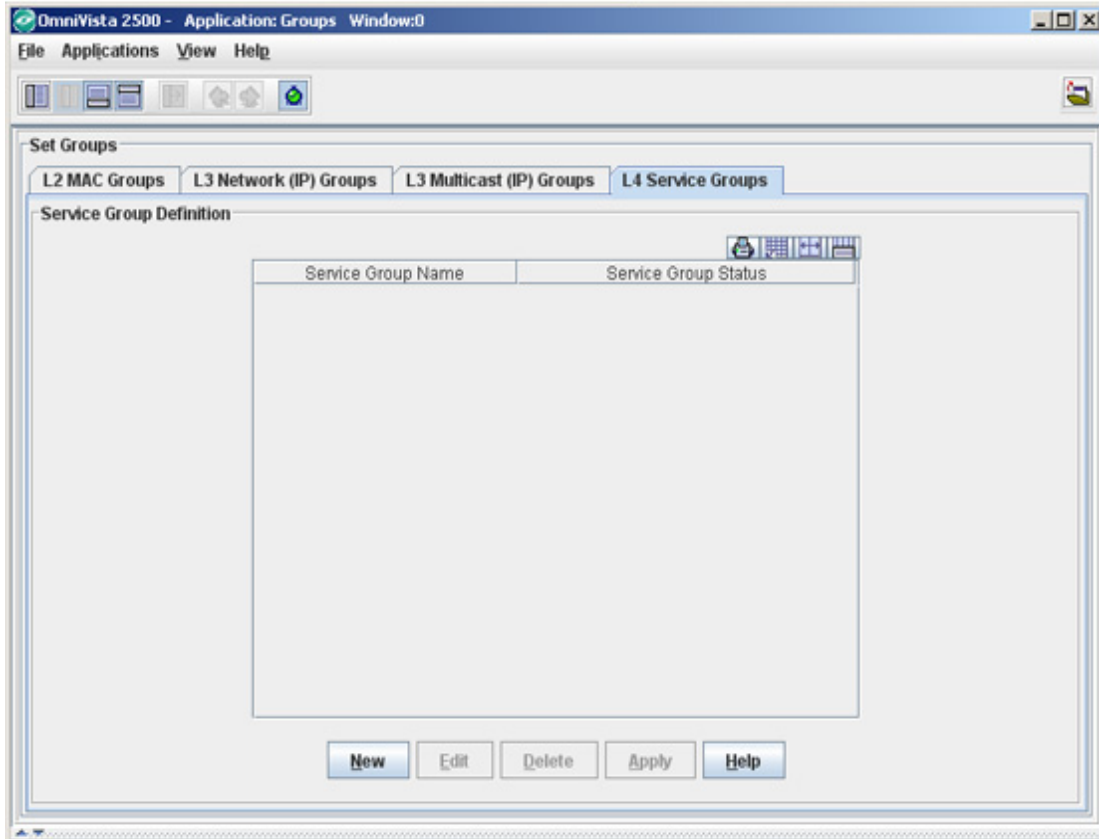
The Multicast Groups Tab



L4 Service Groups Overview

The **L4 Service Groups** tab enables you to create service groups, which can be used in creating various policy conditions, such as Service group condition.

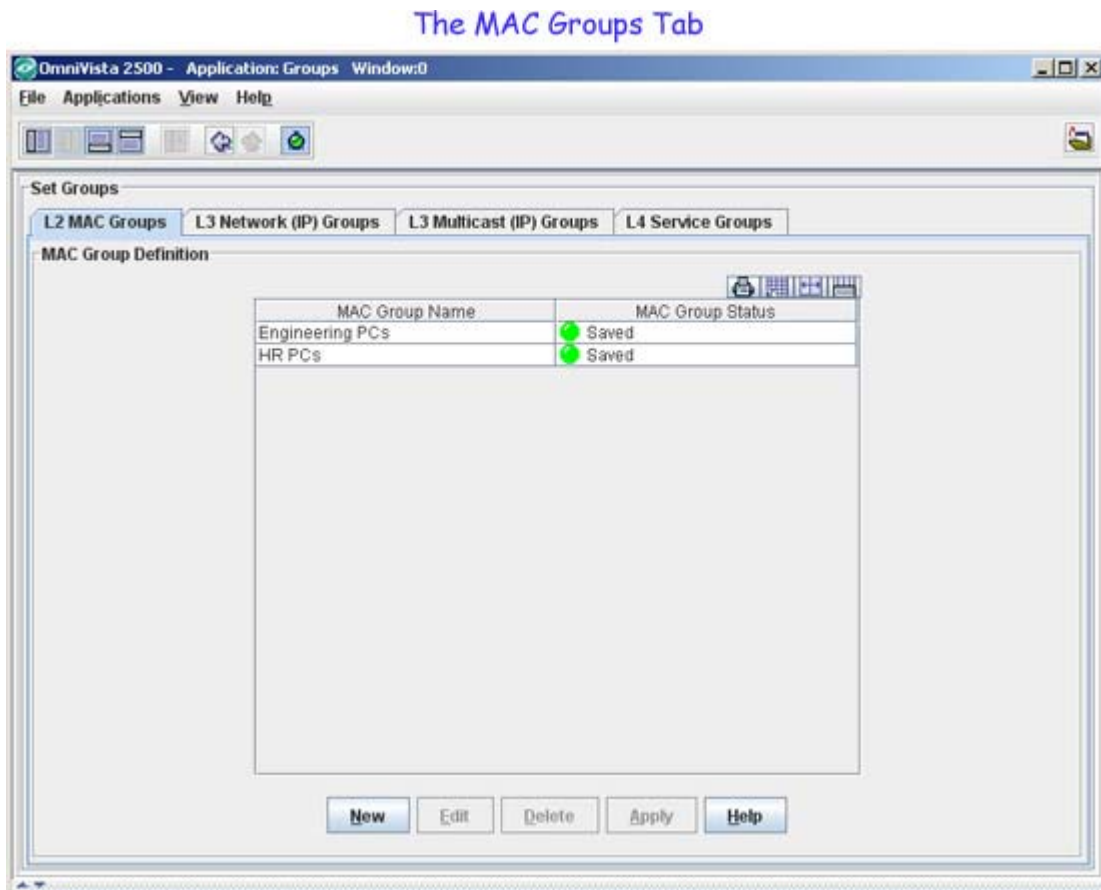
The Service Groups Tab



The MAC Groups Tab

The **L2 MAC Groups** tab displays the MAC groups that exist in the LDAP repository. The MAC groups created using this tab can be used for creating policy conditions, such as SecureView ACL conditions and PolicyView QoS conditions. The MAC Groups tab his used to:

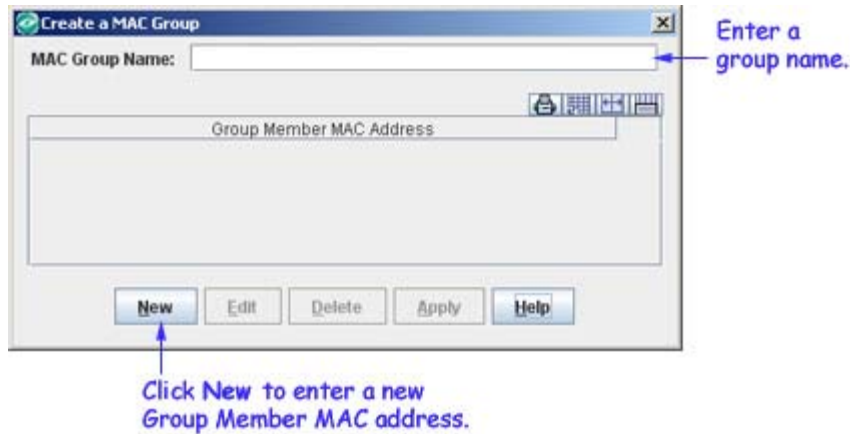
- Create a MAC Group
- Edit a MAC Group
- Delete a MAC Group



Creating a MAC Group

Follow the steps below to create a MAC group.

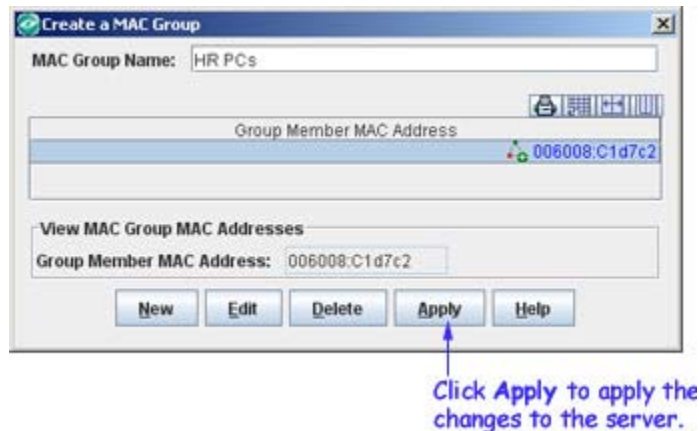
1. Click the **New** button in the **L2 MAC Groups** tab. The **Create a MAC Group** window appears (as shown below).



2. Enter the group name in the **MAC Group Name** field.
3. Click the **New** button. The **Create MAC Group MAC Addresses** panel appears.
4. Enter the MAC address in the **Group Member MAC Address** field.

Note: At least one MAC address must be entered for a MAC group.

5. Click the **OK** button. The created group member is displayed in the **Group Member MAC Address** list, and the **Apply** button is enabled (as shown below). Repeat steps 3 to 5 to add additional group member MAC address(es).

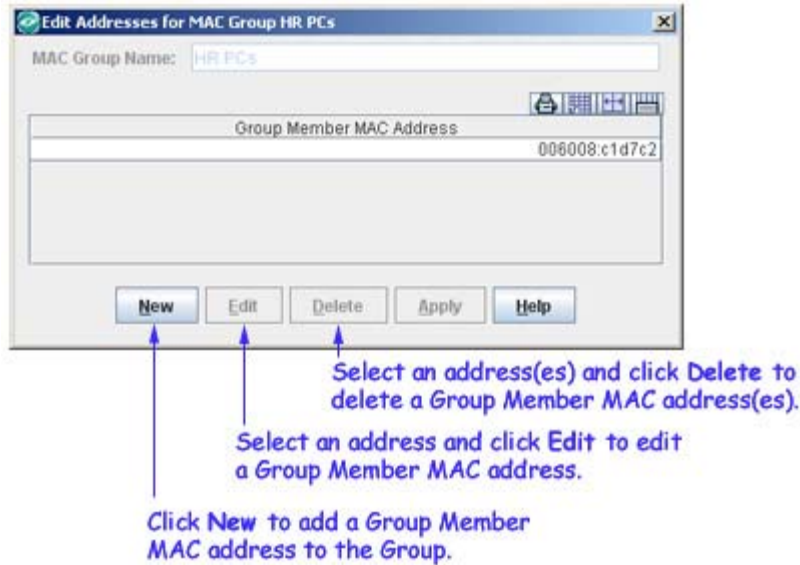


6. Click the **Apply** button to apply the changes to the LDAP repository. You can see the created MAC group in the **MAC Group Definition** table.

Editing a MAC Group

Follow the steps below to edit a MAC group.

1. Select the desired group from the **MAC Group Definition** table and click the **Edit** button. The **Edit Addresses for MAC Group** window appears (as shown below).



2. Make necessary changes in the **Edit Addresses for MAC Group** window.

Note: A MAC group name cannot be changed. If you want to change a MAC group name, you have to delete and recreate the group.

3. The **Apply** button is enabled after the necessary changes are made. Click the **Apply** button to apply the changes to the server.

Deleting a MAC Group

Follow the steps below to delete a MAC group.

1. Select the desired group from the **MAC Group Definition** table.

2. Click the **Delete** button. The MAC group status changes from "Saved" to "Unsaved Delete". Repeat steps 1 and 2 to delete additional groups.

3. Click the **Apply** button to apply the changes to the server.

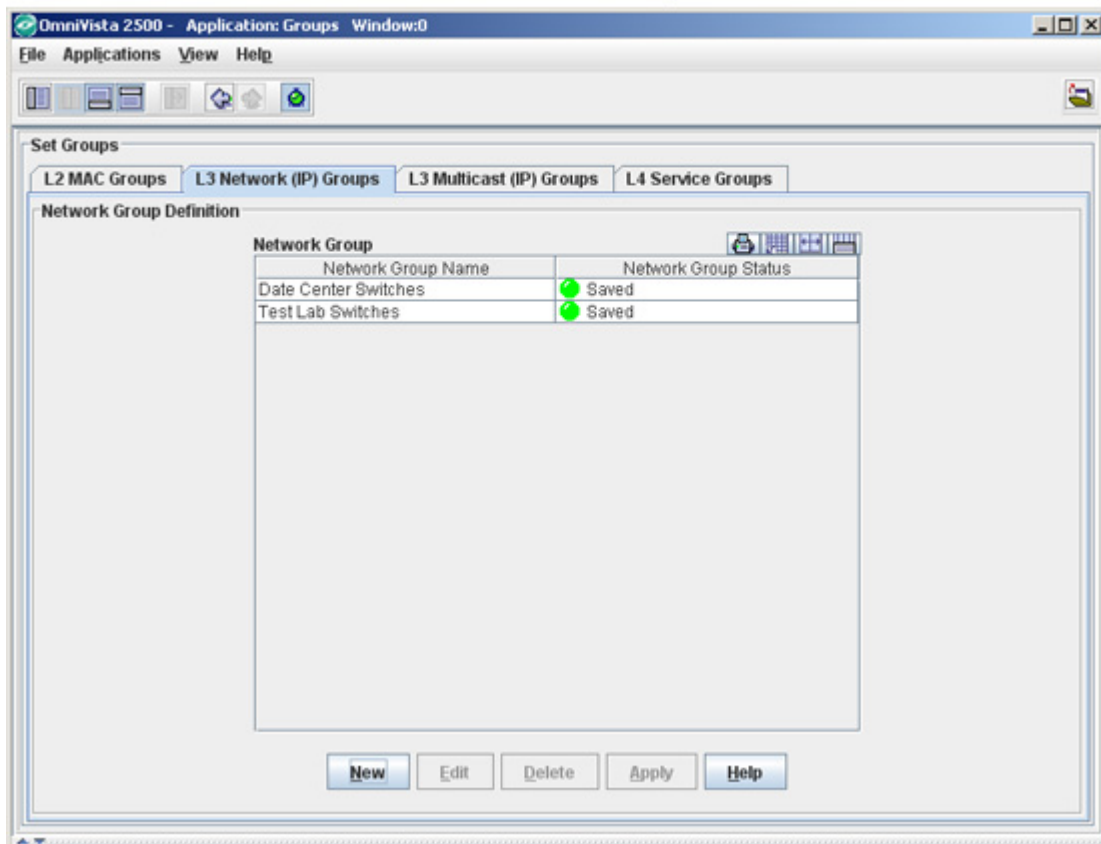
Note: MAC groups that are in use by policy conditions cannot be deleted. To delete such MAC groups, de-select them from the policy conditions.

The Network (IP) Groups Tab

The **L3 Network (IP) Groups** tab displays the network groups that exist in the LDAP repository. The network groups created using this tab can be used for creating policy conditions, such as SecureView ACL conditions and PolicyView QoS conditions. The Network Groups tab is used to:

- Create a Network Group
- Edit a Network Group
- Delete a Network Group

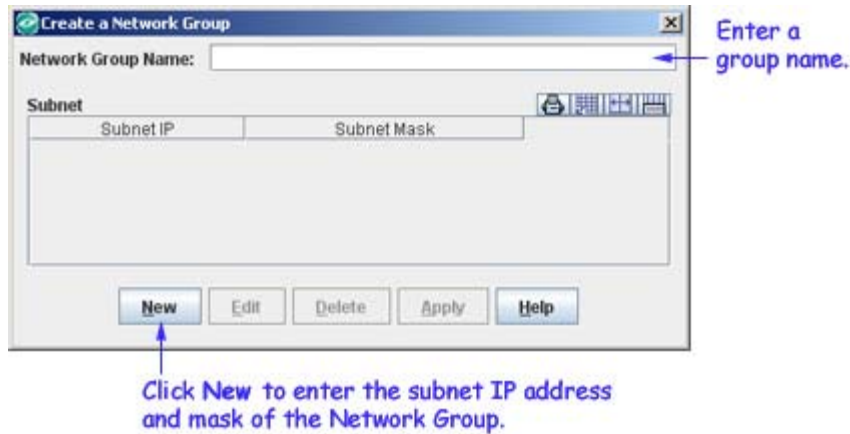
The Network (IP) Groups Tab



Creating a Network Group

Follow the steps below to create a network group.

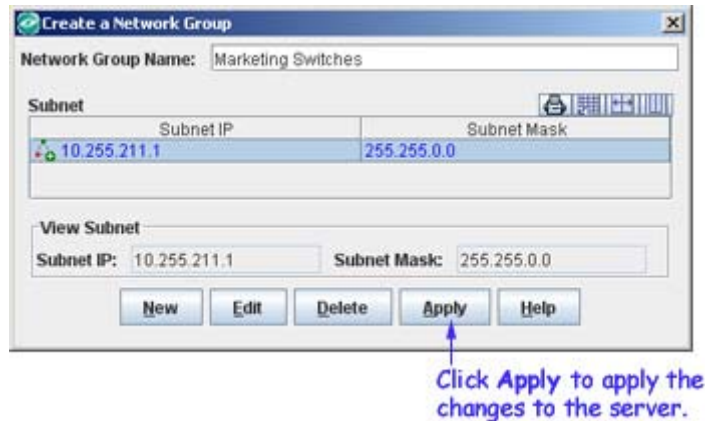
1. Click the **New** button in the **L3 Network (IP) Groups** tab. The **Create a Network Group** window appears (as shown below).



2. Enter the group name in the **Network Group Name** field.
3. Click the **New** button. The **Create Network Group IP Addresses** panel appears.
4. Enter the IP address in the **Subnet IP** field.

Note: At least one IP address must be entered for a network group.

5. Click the **OK** button. The **Apply** button at the bottom of the **Create a Network Group** window is enabled (as shown below). Repeat steps 3 to 5 to add additional IP address(es).

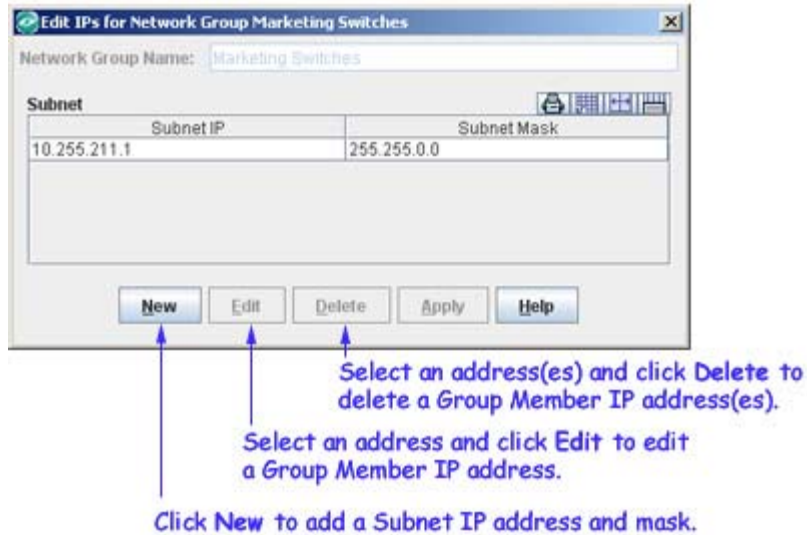


6. Click the **Apply** button to apply the changes to the LDAP repository. You can see the created network group in the **Network Group Definition** table.

Editing a Network Group

Follow the steps below to edit a network group.

1. Select the desired group from the **Network Group Definition** table and click the **Edit** button. The **Edit IPs for Network Group** window appears (as shown below).



2. Make the necessary changes in the **Edit IPs for Network Group** window.

Note: A network group name cannot be changed. If you want to change a network group name, you have to delete and recreate the group.

3. The **Apply** button is enabled after the necessary changes are made. Click the **Apply** button to apply the changes to the server.

Deleting a Network Group

Follow the steps below to delete a network group.

1. Select the desired group from the **Network Group Definition** table.

2. Click the **Delete** button. The network group status changes from "Saved" to "Unsaved Delete". Repeat steps 1 and 2 to delete additional networks.

3. Click the **Apply** button to apply the changes to the server.

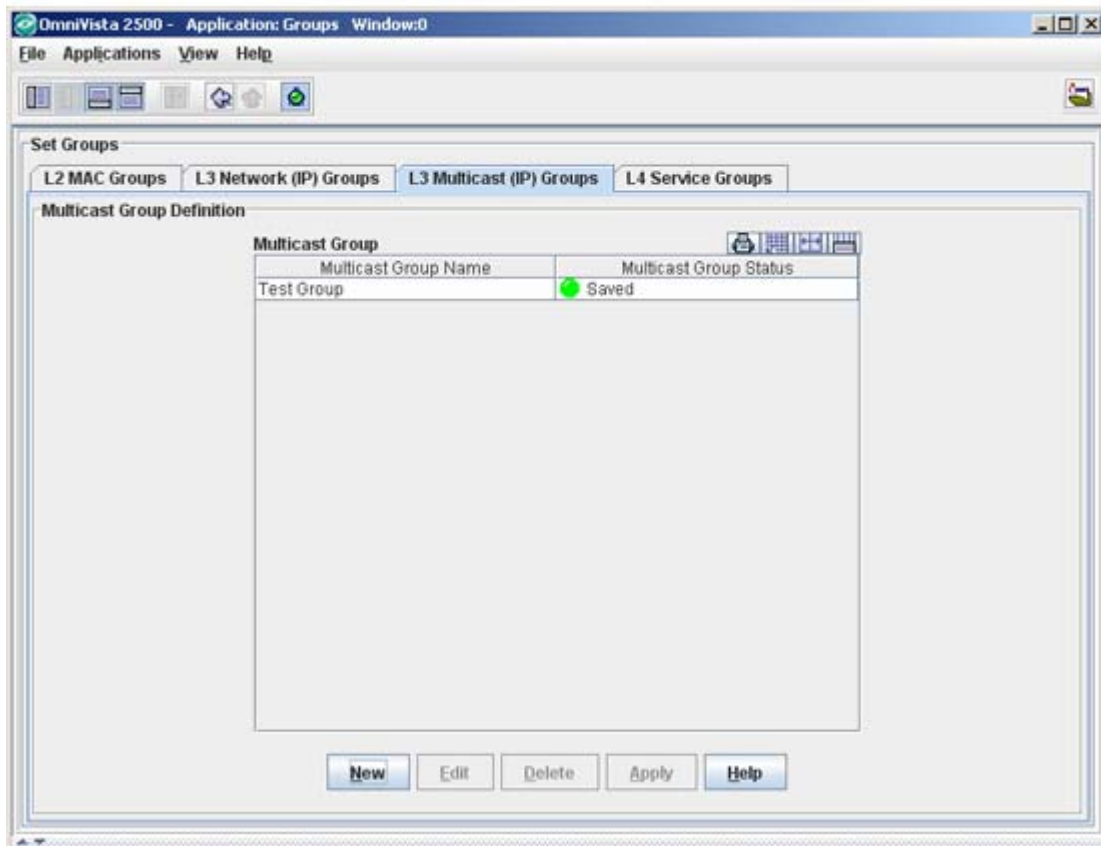
Note: A network group that is in use by policy conditions cannot be deleted. To delete such network groups, de-select them from the policy conditions.

The Multicast (IP) Groups Tab

The **L3 Multicast (IP) Groups** tab displays the multicast groups that exist in the LDAP repository. The multicast groups created using this tab can be used for creating policy conditions, such as SecureView ACL conditions and PolicyView QoS conditions. The Multicast Groups tab is used to:

- Create a Multicast Group
- Edit a Multicast Group
- Delete a Multicast Group

The Multicast Groups Tab



Creating a Multicast Group

Follow the steps below to create a multicast group.

1. Click the **New** button in the **L3 Multicast (IP) Groups** tab. The **Create a Multicast Group** window appears (as shown below).



2. Enter the group name in the **Multicast Group Name** field.
3. Click the **New** button. The **Create Multicast Group** panel appears.
4. Enter the multicast IP address in the **Subnet IP** field.

Note: At least one IP address must be entered for a Multicast group.

5. Click the **OK** button. The **Apply** button at the bottom of the **Create a Multicast Group** window is enabled (as shown below). Repeat steps 3 to 5 to add additional multicast addresses.



6. Click the **Apply** button to apply the changes to the LDAP repository. You can see the created multicast group(s) in the Multicast Group Definition table.

Editing a Multicast Group

Follow the steps below to edit a multicast group.

1. Select the desired group from the **Multicast Group Definition** table and click the **Edit** button. The **Edit IPs for Multicast Group** window appears (as shown below).



2. Make the necessary changes in the **Edit IPs for Multicast Group** window.

Note: A multicast group name cannot be changed. If you want to change a multicast group name, you have to delete and recreate the group.

3. The **Apply** button is enabled after the necessary changes are made. Click the **Apply** button to apply the changes to the server.

Deleting a Multicast Group

Follow the steps below to delete a multicast group.

1. Select the desired group from the **Multicast Group Definition** table.

2. Click the **Delete** button. The multicast group status changes from "Saved" to "Unsaved Delete". Repeat steps 1 and 2 to delete additional groups.

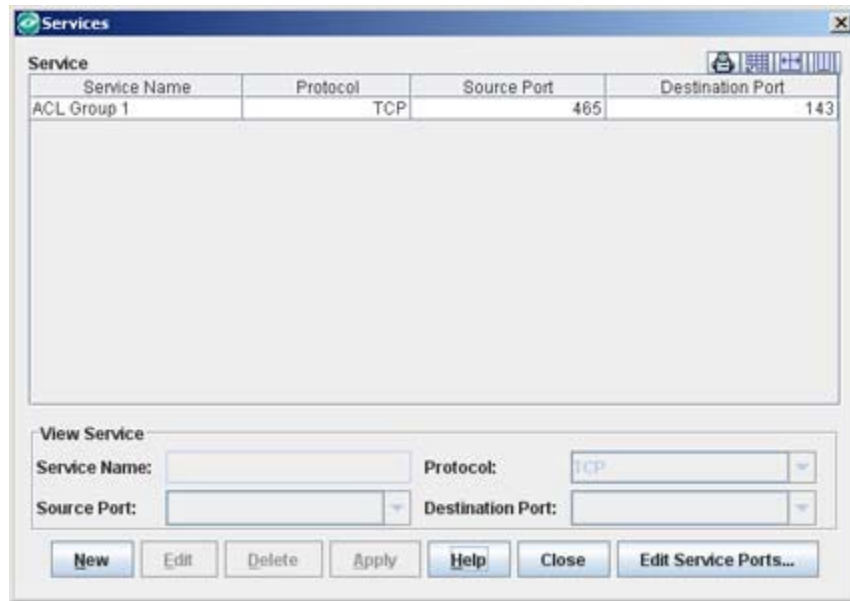
3. Click the **Apply** button to apply the changes to the server.

Note: A multicast group that is in use by policy conditions cannot be deleted. To delete such a group, de-select it from the policy conditions.

The Services Window

A Service Group must be associated with a Service. The Services Groups window is used to:

- Create a Service
- Edit a Service
- Delete a Service



Creating a Service

Follow the steps below to create a service.

1. Click the **New** button in the **Services** window. The **Create Service** panel appears (shown below).



2. Enter the service name in the **Service Name** field.

3. Specify the source or destination port, or both. If you are specifying a source port, select the desired port from the **Source Port** drop-down list. If you are specifying a destination port, select the desired port from the **Destination Port** drop-down list. Both combo boxes display a list of well-known TCP or UDP ports. If you want to create, edit, or delete a service port, click the **Edit Services Ports...** button. See “The Service Ports Window”, on page 19 for more information.

4. Select the **Protocol** (TCP or UDP) from the **Protocol** drop-down list.

5. Click the **OK** button. The service appears in the **Services List** table in blue.

6. Click the **Apply** button to apply the changes to the server.

Editing a Service

Follow the steps below to edit a service.

1. Select the desired service from the **Services List** table and click the **Edit** button. The **Edit Service** panel appears (shown below).



2. You can make the necessary changes in this panel.

Note: A service name cannot be changed. If you want to change the service name, you have to delete and recreate the service name.

3. After making the changes, click the **OK** button. The service appears in the **Services List** table in blue.
4. Click the **Apply** button to apply the changes to the server.

Deleting a Service

Follow the steps below to delete a service.

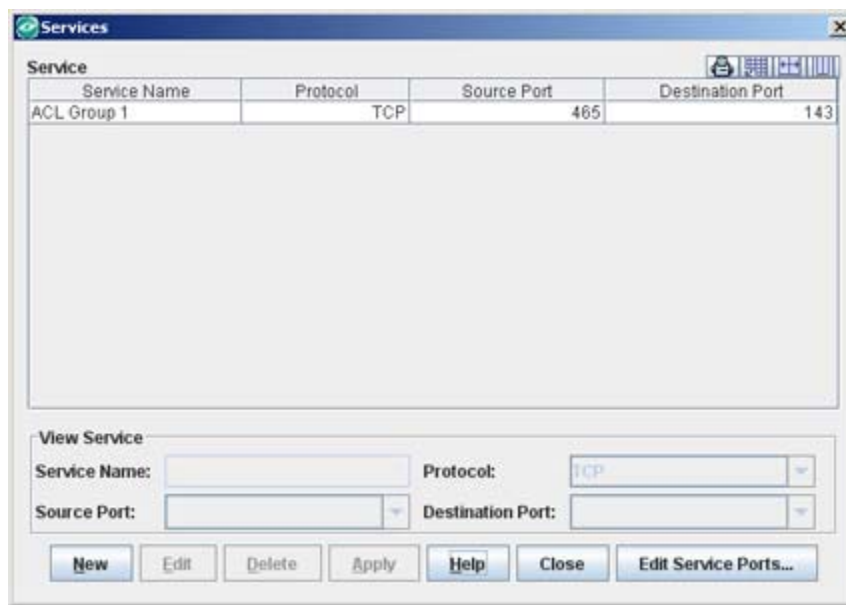
1. Select the desired service from the **Services List** table.
2. Click the **Delete** button. The service list **Status** changes from "Saved" to "Unsaved Delete". Repeat steps 1 and 2 to delete additional services.
3. Click the **Apply** button to apply the changes to the server.

Note: A service that is in use by policy conditions cannot be deleted. To delete such services, de-select them from the policy conditions.

The Services Window

A Service Group must be associated with a Service. The Services Groups window is used to:

- Create a Service
- Edit a Service
- Delete a Service



Creating a Service

Follow the steps below to create a service.

1. Click the **New** button in the **Services** window. The **Create Service** panel appears (shown below).



2. Enter the service name in the **Service Name** field.

3. Specify the source or destination port, or both. If you are specifying a source port, select the desired port from the **Source Port** drop-down list. If you are specifying a destination port, select the desired port from the **Destination Port** drop-down list. Both combo boxes display a list of well-known TCP or UDP ports. If you want to create, edit, or delete a service port, click the **Edit Services Ports...** button. See “The Service Ports Window”, on page 19 for more information..

4. Select the **Protocol** (TCP or UDP) from the **Protocol** drop-down list.

5. Click the **OK** button. The service appears in the **Services List** table in blue.

6. Click the **Apply** button to apply the changes to the server.

Editing a Service

Follow the steps below to edit a service.

1. Select the desired service from the **Services List** table and click the **Edit** button. The **Edit Service** panel appears (shown below).



2. You can make the necessary changes in this panel.

Note: A service name cannot be changed. If you want to change the service name, you have to delete and recreate the service name.

3. After making the changes, click the **OK** button. The service appears in the **Services List** table in blue.
4. Click the **Apply** button to apply the changes to the server.

Deleting a Service

Follow the steps below to delete a service.

1. Select the desired service from the **Services List** table.
2. Click the **Delete** button. The service list **Status** changes from "Saved" to "Unsaved Delete". Repeat steps 1 and 2 to delete additional services.
3. Click the **Apply** button to apply the changes to the server.

Note: A service that is in use by policy conditions cannot be deleted. To delete such services, de-select them from the policy conditions.

The Service Ports Window

The Service Ports window displays the service ports that exist in the LDAP repository. The window is used to:

- Create a Service Port
- Edit a Service Port
- Delete a Service Port



Creating a Service Port

Follow the steps below to create a service port to the list of well-known ports displayed in the **Source** or **Destination Port** drop-down lists.

1. Click the **New** button in the **Service Ports** window. The **Create Service Port** panel appears (as shown below).

The 'Create Service Port' dialog box contains the following fields and controls:

- Service Port Name:** A text input field.
- Protocol:** A drop-down menu currently set to 'TCP'.
- Port Number:** A text input field.
- Buttons at the bottom: 'OK', 'Default', 'Cancel', 'Help', and 'Close'.

2. Enter a port name in the **Service Port Name** field.

3. Select the **Protocol** (TCP or UDP) from the **Protocol** drop-down list.

4. Enter the port number in the **Port Number** field.

5. Click the **OK** button. The port appears in the **Service Ports List** table in blue.

6. Click the **Apply** button to apply the changes to the server. The new port is added to the **Service Ports List** table and will appear in the list of well-known TCP or UDP ports that is displayed in the Source and Destination drop-down lists.

Editing a Service Port

Follow the steps below to edit a service port.

1. Select the desired service port from the **Service Ports List** table and click the **Edit** button. The **Edit Service Port** panel appears.



Note: The **Service Ports List** defaults to TCP Ports only. To edit a UDP port, Click the **New** button at the bottom of the Service Ports List, select UDP from the **Protocol** drop-down list, then click the **Cancel** button. The UDP ports will be displayed. Select the desired UDP port and click the **Edit** button.

2. Make the necessary changes in this panel.

Note: A service port name cannot be changed. If you want to change the service port name, you have to delete and recreate the service port.

3. After making the changes, click the **OK** button. The service port appears in the **Service Ports List** table in blue.

4. Click the **Apply** button to apply the changes to the server.

Deleting a Service Port

Follow the steps below to delete a service.

1. Select the desired service port from the **Service Ports List** table.

Note: The **Service Ports List** defaults to TCP Ports only. To edit a UDP port, Click the **New** button at the bottom of the Service Ports List, select UDP from the **Protocol** drop-down list, then click the **Cancel** button. The UDP ports will be displayed. Select the desired UDP port and click the **Edit** button.

2. Click the **Delete** button.

Note: The services ports that are in use by policy conditions cannot be deleted.